



**Greater Morpeth  
Development Trust**

Regeneration of town & countryside

[www.gmdt.net](http://www.gmdt.net)

# GMDT

# Annual Report

April 2019 - March 2020







A successful development trust

## Greater Morpeth Development Trust (GMDT)

### Objectives and aims of GMDT



Greater Morpeth Development Trust (GMDT) has been in existence since 2006 and the diverse range of projects carried out over the past fourteen years could not have happened without the support of our partners, funders and members.

GMDT has continued its objective of developing partnership networks through facilitation to develop initiatives and through the skills base in the team adding value where ever possible to make Morpeth a quality place to live.

GMDT has developed a portfolio of projects to deliver these aims and objectives and the major capital schemes which have benefitted the town include the redevelopment of Morpeth Town Hall and Morpeth Railway Station which generate development revenue and a sustainable income to support the activities of GMDT. This has been achieved through the support of a number of funding bodies who have invested in the vision to redevelop key public assets within Morpeth – the main funders being Heritage Lottery Fund, Network Rail, Northern Trains Limited, Northumberland County Council, Railway Heritage Trust and North East Rural Growth Network.

The existing staff team is made up of 1 full time and 2 part time members supported by a range of professional associates to deliver a portfolio of quality projects and through engaging volunteers' support and strong partnership working we work to maintain our level of service delivery for the benefit of Morpeth. More detail about the activities during the year and photographs and testimonials of the projects can be seen on our website [www.gmdt.net](http://www.gmdt.net).

The front cover is from the Station Opening event featuring the Time Bandits in historic dress.

GMDT is an independent company limited by guarantee and a registered charitable trust.

Company Registration Number 5676236, Charity Number 1117036, VAT Number 101 6832 50

### Contacting GMDT

Carlisle Park Lodge  
Castle Square  
Morpeth  
NE61 1YD

[www.gmdt.net](http://www.gmdt.net)  
Tel: 01670 503866  
Email: [info@gmdt.org](mailto:info@gmdt.org)

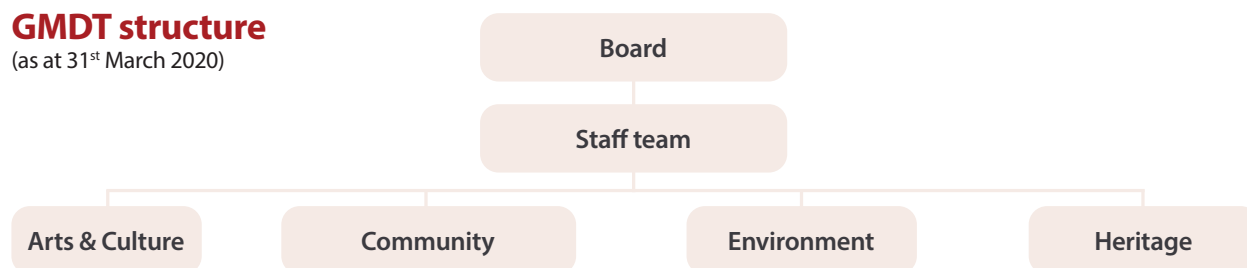




# GMDT structure and team

## GMDT structure

(as at 31<sup>st</sup> March 2020)



The interest groups are made up of volunteers who help to develop and deliver regeneration projects and support other groups operating within the area. There are a number of projects that the interest groups work together on, like the Morpeth-wide signage and interpretation project and the events portfolio.

## GMDT Staff



**David Lodge**  
Chief Executive Officer



**Karen Tweddle**  
Administration Officer



**Caroline Clough**  
Administration Officer



**Doug Phillips**  
Chairman and  
Community Director



**Karen Bower**  
Vice Chairman and  
Community Director



**Frank Rescigno**  
Arts and Culture Interest  
Group Director



**Kim Bibby-Wilson**  
Heritage Interest Group  
Director



**Hugh Edmundson**  
Environment Interest  
Group Director



**Barbara Martin**  
Community Director



**Mike Willis**  
Community Director

The phrase 'punching above your weight' is often used to suggest that someone is engaged in an activity perhaps unlikely to be expected of them or beyond their capabilities to achieve, and - with the greatest of respect - it could be applied to the involvement of Greater Morpeth Development Trust in relation to the restoration and redevelopment of Morpeth Railway Station.

For around seven years GMDT had been at the sharp end of procuring and delivering a £2.3m project to not only safeguard the future of this unique piece of Victorian railway history but to give it a new lease of life as a modern transport facility and an enterprise hub for small business. For a small community-based organisation run by three staff and a volunteer board of directors, and with the backing of some supportive partners, the station achievement is little short of remarkable.

As no less a person than Sir Peter Hendy, chairman of Network Rail, said in a recent edition of *Inside Morpeth*, the town once again has a railway station to be proud of, at the same time as admitting that is something his organisation would not have been able to find the time nor the funding to do. It's not the first time the Trust has given an iconic Morpeth building a new lease of life - remember a decade ago it project managed the restoration of Morpeth Town Hall as a modern civic building.

But the Trust is about more than just looking after old buildings, and it has done so much to help make Morpeth a better place to live, work and visit. Punching above its weight may be, but Morpeth is fortunate to have an organisation such as GMDT putting that weight behind the town it does so much for.

**Jan Leech**  
Editor of *Inside Morpeth*



# Interest Groups Reports



Rt Hon Philip Howard test driving a blood bike



## Arts & Culture Director's Report

The key focus this year has been - Morpeth Cinema, Morpeth Movie Weekend, Picnic in the Park and Morpeth Theatre Evenings.

**Morpeth Cinema** - For Morpeth Cinema, 2019/20 started with a popular screening of *The Guernsey Literary & Potato Peel Pie Society* and carried on with average attendances of 75. Other sell out highlights were *Stan and Ollie*, the biopic of Laurel and Hardy, and *Fisherman's Friends*. June's screening of *Colette* took place in the Ballroom upstairs at the Town Hall, and proved a hit with audiences, having a better blackout and more comfortable seats!

The 3rd Movie Weekend in February 2020 was bigger and better again, featuring 10 films in the Town Hall over two days. The two blockbusters were *Rocketman* and *Downton Abbey*, but there were also good attendances for *Northumberland on Film*, a miscellany of local footage presented by the North East Film Archive, and *Sorry We Missed You*, the latest hard hitting film from Ken Loach filmed in Newcastle. World cinema was represented by *Woman at War*, featuring an Icelandic eco warrior facing her own moral dilemma, and the Italian film, *Happy as Lazzaro*, an appropriate fable for our times. Audience feedback was excellent. The last cinema screening was of *Judy* in early March prior to the Covid 19 but we look forward to resuming in 2021, when the Cinema will be celebrating 10 years of bringing the big screen back to Morpeth.

**Dave Warman, Manager of Morpeth Cinema Team.**

**Picnic in the park** - In July 2019 we celebrated the 90<sup>th</sup> anniversary of the gift of Carlisle Park to the people of Morpeth by the Earl of Carlisle. The Rt. Honourable Philip Howard, grandson of the Earl of Carlisle, officially opened the picnic with a ribbon cutting ceremony at the recently reconditioned park gates. We had support from NCC parks

division, Morpeth Town Council, and Morpeth Churches Together. The Friends of the Floral Clock hosted a 1920s Tea Room in the park pavilion which was very popular. We estimated over 3000 people attended the 2019 picnic with many families having small picnics throughout the park enjoying an extensive programme of events including a new attraction this year, go carts for the 6 to 10 year olds, and old favourites such as Alex Swales as our MC.



Iqbal Khan answering audience questions at the screening of *Othello*

**Theatre Evening: Othello** - On 13 April 2019, the Royal Shakespeare Company presentation of *Othello* directed by Iqbal Khan, was screened in the Morpeth Town Hall. We were fortunate to participate in the RSC Shakespeare Nation project. The RSC mission is to bring their productions out to the rural areas of the UK. As part of the programme we had the director, Iqbal Khan, explaining the process of cast selection, directing and the production problems faced with this novel production of *Othello* featuring 2 black actors in the lead roles. Total attendance of 60 included several KEVI students. After the screening Iqbal had a Q&A session which developed into a very informative discussion. It was a very successful evening with a request from the audience to continue this type of event.



**Theatre Evening: The Nutcracker** - Our final event in 2019/20 was the Royal Ballet's performance of the *Nutcracker* held at the Morpeth Town Hall on Saturday 30 November. A total of 86 people attended the 3pm performance which included many families with children.



**Frank Rescigno**

## Heritage Director's Report



The past year has seen GMDT's flagship projects at Morpeth Railway Station and Cresswell Pele Tower coming to fruition; reports are featured elsewhere. Progress was also made on two partnership schemes - investigating conserving/utilizing the KEVI school archive and restoring the Boys' Brigade building, for the latter of which a revised application for feasibility study funding was successful.

Within the normal programme of annual activity by the Trust, the Heritage Interest Group was again involved in April's Morpeth Northumbrian Gathering, September's Heritage Open Days, and the quarterly meetings of the Morpeth Heritage Network.

April saw the 52nd Morpeth Northumbrian Gathering, with an Ower the Watter theme bringing Scandinavian, French, German and Scottish performers to help leading local artists celebrate our traditional heritage at indoor and outdoor venues across the town over three days. The Trust assisted with sourcing volunteers, logistics and office support for the administration and competitions. As part of the umbrella group Morpeth Heritage Network, GMDT continued to discuss local heritage news and conservation issues, including potential interpretation signage at Bullers Green to commemorate John Rastrick, threshing machine inventor.

**Kim Bibby-Wilson**

## Environment Director's Report



Members of the group continue to play a significant role in the town and wider area in terms of networking, developing partnership activities with other groups, and as lobbyists in environmental matters.

In 2019 our liaison with Northumberland County Council reached fruition with the introduction of new steps facilitating the footpath access between Easter Field and Bluebell Wood.

This is part of the footpath network on the eastern side of the town, and our footpath work continued with a comprehensive re-survey of the footpaths covered by our Walking Map set, produced some years ago. We then took a decision to reduce the sets to 12 maps, with a focus on the area close to the town, and to update the cover, printed in 2020. We were assisted in this by the Environment Agency and Natural England who are developing a Wansbeck project, with strong emphasis on our native species the White Clawed Crayfish.



This year as a junior partner to the Morpeth Litter Group we continued to assist with litter collection in the town. Dai Richards and Tracy Kenny, working as local Keep Britain Tidy representatives continue to lead

several litter picks around Morpeth, and to build upon this by spreading the word. This included talks to the Rotarians, and the photo below shows a talk being delivered by Dai and Tracy to the Friends of Kirkley Hall in February 2020.



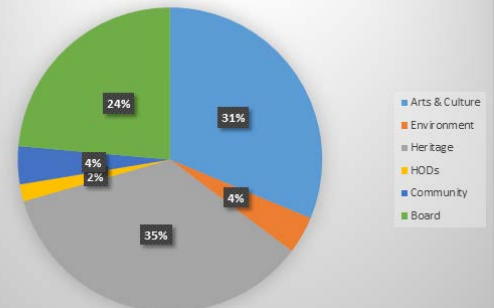
The Group has also been able to obtain a number of young horse chestnut trees, which will be planted around the town in suitable locations in autumn/winter 2020.



The Environment Interest Group continues to monitor signage, public footpaths, bridleways and permissive paths in the Morpeth area, and to lobby landowners and the County Council when issues arise. Sets of GMDT walking maps and John Caffrey's bird cards are for sale online and at the Trust office, the Chantry and Chris Guy's Newsagents at Kirkhill, as well as other TIC shops in the area.

*Hugh Edmundson*

Volunteer Hours 2019/20



## Community Director's Report

Our group of supportive volunteers continue to enhance the work of GMDT staff and enable us to achieve much more for the Morpeth community than would otherwise be possible with our limited resources.

Over the last financial year volunteers have supported tours of and information sharing at Morpeth station as renovation work continued. A number have joined the local Keep Britain Tidy litter picking team led by Dai Richards supporting our partnership working. The community cinema team works hard to support our monthly screenings and additional volunteers come along for our annual Movie Weekend.

A new volunteer took on the co-ordination of Heritage Open Days (HODs) supported by one of our community directors. This allows Morpeth to advertise a very comprehensive programme of activities over the annual national HODs weekend in September. Without our volunteers none of these activities could take place. Our newsletter for volunteers and members is issued three times a year providing a brief overview of the latest news, advertising forthcoming local events and volunteering opportunities. However just at the end of our financial year all events and activities stopped and for the majority of 2020. We have continued to be in contact with our volunteers over this period and let's hope we can soon be active again. Thanks to everyone who has given their time to support GMDT in 2019/20.

*Karen Bower*  
GMDT Vice Chair



# Morpeth Station

Picture the scene. The year is 1847, a decade into the 64-year-long reign of Queen Victoria and people are boarding and alighting from the very first passenger trains to stop at the newly opened Morpeth Railway Station.

Fashionable ladies in their smart hats and dome-shaped skirts with hemlines brushing the ground, are accompanied by gentlemen elegant in their frock coats and top hats, as they walk the platforms of the station designed by the renowned Victorian railway architect Benjamin Green, to enjoy the experience of riding the new-fangled form of transport that would transform travel across Britain.

Following what became known as his Jacobethan baronial style of railway buildings, Morpeth Station would have cost what at the time would have been the princely sum of £9,500, to build.

Interestingly, it would be another three years before Newcastle Central Station opened in 1850, while at either ends of what became the main East Coast line, the first trains would not be arriving at or leaving King's Cross in London for a further two years, and in Edinburgh the Waverley Station as passengers know it today, would not open until 1868.

Green designed Morpeth Station for the Newcastle & Berwick Railway Company which played such a pivotal role in pioneering passenger rail travel across the North of England as well as through the Scottish Borders. Alongside Morpeth he also designed a number of smaller Northumberland stations such as Acklington, Alnmouth, Belford, Chathill, Lucker and Tweedmouth. Today, however, Morpeth is the sole surviving operational Green railway station in the region.



*The old and the new sharing space at Morpeth Station*

Fast-forward 173 years and those Victorian travellers would surely have been bemused and astonished at the sight of the sleek, aerodynamic TransPennine Nova and LNER Azuma trains – built by the same firm responsible for the so called Japanese ‘bullet trains’ – which are capable of speeds in excess of 130mph, and now regularly travel through or stop at Morpeth Railway Station.

What those early travellers would have recognised if they could have time travelled to Morpeth in 2020, is that station has structurally changed very little since the pioneering days of passenger rail travel in the town. So, they – and indeed Benjamin Green – would surely have approved of the recently completed make-over which has left the main station building looking as good as it splendidly did when it was first opened.

Without doubt, that is down to the unwavering determination of a partnership team led by Greater Morpeth Development Trust, which from the outset of the project, was doggedly committed to restoring and repairing where necessary, the structure and fabric of the building to retain as closely as possible the character and vision of the station as

it was envisaged by Benjamin Green all those years ago – an approach perhaps best summed up by someone who at the last moment, was unable to attend in person, an event to mark the completion of work at the station.

Sir Peter Hendy, chairman of Network Rail, had been scheduled to perform the opening ceremony, but found he was unable to travel to Morpeth because of his need to attend a high-level Covid-19 meeting. In a personal letter read out at the event, however, he wrote: “When the railways were built their proprietors and engineers were proud of the connectivity they brought and the economic and social progress which resulted from that.

“Today, the same connectivity is still the most effective way of creating jobs and growth, and we remain just as proud of our railways. However, our economic circumstances are different and those fine buildings that we have inherited and we are custodians of, sometimes languish unloved without the help of others to conserve them effectively in the 21st Century. That is why what you have all achieved at Morpeth is so valuable.



Once again GMDT has shown what a small but dedicated team can achieve, cementing its reputation for delivering quality renovations of Morpeth's historic buildings

**Ian Lavery, MP for Wansbeck**



"At Network Rail we could not have put in the effort or the funding, to do what has been done at Morpeth, but we have I hope, facilitated all the partners to achieve that with us.

"A place should be proud of its station and now again Morpeth has a station to be proud of. Congratulations to everyone who has made this happen."

Inside Morpeth has followed the progress of the station story along what it has been admitted, was sometimes a bumpy road, so it is worth reflecting on how it all began.

That was when Andy Savage (Executive Director of the Railway Heritage Trust) took over his job in 2010, and there was a proposal on the books to convert Morpeth Railway Station main building into an Indian restaurant that had been put forward by the same team that had made such a success of a similar venture at Corbridge Station.

But, when it became obvious that such a scheme would not work at Morpeth, it was – as he told us – 'back to square one' to see what could be done to give the station a new lease of life and a viable, sustainable future.

"Happily, David Lodge (Chief Executive of Greater Morpeth Development Trust) approached me to say they were interested in taking over the building," said Andy.

*The elegant portico entrance and the tall chimneys are now proudly back in place at the station*

So, a meeting was arranged with David and Doug Phillips, who has recently retired as the Trust's chairman, so that he could visit the 300-year-old Morpeth Town Hall to see the conservation and modernisation work GMDT had project managed in 2009, to give the historic landmark in Morpeth town centre, a new lease of life as a modern civic building. By the end of the visit Andy admits he was 'sold' on the Trust's idea for the train station.

Before anything could happen, however, GMDT had to convince Network Rail and Northern Rail, that as a small team of one full and two part-time members of staff, it had the wherewithal to plan and deliver such an ambitious project, as well as raising the substantial necessary funding that would be needed to carry out the work.

At the outset the challenge was to raise £1.6m but that gradually rose to £2.3m through further enhancements to the station's historic features, unforeseen structural issues and the creation of additional space such as the caboose-style taxi office.

"It took more than six years from that first meeting to the start of work at the site, and now more than eight years after the ideas were first put forward, the project is complete – and doesn't the station look wonderful," Andy added.

The Railway Heritage Trust Andy leads, is a small company that provides substantial grants to help restore and give new uses to historic buildings along the rail network, and, he said, Morpeth Station has achieved both those laudable aims.



GMDT and its partners have done a great job at the station...

**Councillor Richard Wearmouth, County Council Cabinet Portfolio Holder for Business & Tourism**





*Andy Savage pictured with the painting of Morpeth Station he was presented with as a memento of the opening ceremony*

In particular, Andy singled out for special praise, GMDT's vision to restore the original stylish Victorian portico entrance to the station which had been boarded up for many years, as well as the re-instatement of the 15 very tall chimneys which originally gave it such a characterful appearance. The chimneys had been substantially reduced in size some years ago for safety reasons.

"As the last surviving operational Benjamin Green station, it was vital that we retained its original feel and GMDT and its team, has done that with a vengeance," added Andy.

None of what has been achieved at Morpeth, he said however, would have been possible without the support of the partners who raised and secured the funding needed to carry out the work.

Those partners led by GMDT, included the National Lottery Heritage Enterprise Fund, the Railway Heritage Trust, Network Rail, Northern Rail, Northumberland County Council and the North East Rural Growth Network.

Prior to their involvement a number of smaller grants at the feasibility and development stage of the project, came from organisations such as the Heritage Lottery Fund, Northumberland County Council, the Homes & Community Association, CORE and the Architectural Heritage Fund, all of which helped shape the final delivery plan.

The funding was not only secured to safeguard the future of the Grade II Listed station building, but to provide an enterprise hub for small businesses as well as creating a state-of-the-art ticket office, a café and taxi office, and providing modern facilities for today's rail users such as new toilets.

"GMDT has to be congratulated on getting the funding package together and sticking with the project through thick and thin," said Andy Savage. "At times it was a close-run thing and on one occasion a major funder was within a couple of days of pulling out, but the project was saved and for that we are so grateful when you see Morpeth Station as it is now."

Looking to the future, Andy said the Railway Heritage Trust has now pledged a further £150,000 grant so that Network Rail can paint the station canopy in colours to match the restoration work as well as replacing seven square steel support columns with new cast iron ones to a Victorian design.

"By this time next year, the station will be up to a standard which matches GMDT's excellent work on the main building and its superb restoration," he added.

With the main station building standing empty and near derelict for many years, a huge amount of work had to be undertaken to restore it to pristine condition. By the time work started 18 months ago, damage caused by a holed and leaking roof which also allowed generations of birds access into the building to leave their calling cards (!), water, damp and rot had taken a toll on its external and internal fabric.

For example, tonnes of guano – that's bird droppings to you and me – had to be removed from inside the building where in places ceilings had been brought down because of the sheer weight of the stuff!

A huge amount of internal repair and restoration work was needed much of it with the intention of retaining the station's original fixtures and fittings wherever possible.

So, original timber window frames have been retained and repaired and a number of Victorian fireplaces have been restored in what are now ground and first-floor offices that will be occupied by budding local businesses. Four of the seven offices have already been let and operators have been found to run the café in the main building and the forecourt taxi office.

The main contractor who carried out the work was STP Construction from Rowlands Gill while the specialist stonework and chimney re-instatement was undertaken by Classic Masonry from North Shields.



All those involved deserve our thanks for bringing back into use such an iconic, historic building in the town...

**Councillor David Bawn, Morpeth Mayor**



# Cresswell Pele Tower Completion in 2020

The project architects were John Curtis and Napper Architects.

"What local people and visitors to Morpeth can now see at the Railway Station is the outcome of a huge amount of work by the Trust and our partners," said David Lodge.

"It has been a long – and at times difficult – road to get where we are today, but we persevered driven on by our determination to not only preserve what is a wonderful example of Victorian railway architecture, but to give travellers to and from Morpeth the very best modern facilities we could provide for them.

"At the same time, we have been enterprising in using empty office space as much-needed accommodation for small local businesses in what surely must be a unique location right alongside the main East Coast railway line. "Morpeth Railway Station has been such an important junction on the line for nearly 175 years as a gateway into the town and to wider Northumberland.

"How it is used today is a far cry from those long-ago times when the first passenger trains were pulling into the station. However, restored to its Victorian splendour and with its enhanced facilities, the station continues to make a statement about what an important modern amenity it is as well as being a living reminder of a very different era of rail travel."

Karen Bower, interim chair of Greater Morpeth Development Trust, added: "GMDT has been at the forefront of giving two historic buildings in the town viable and sustainable futures, and that has been a major achievement for us as part of our commitment to make Morpeth a better place to live, work and visit.

"The station has been at the very heart of life in Morpeth since the middle of the 19th Century and it will continue to do so for many more years to come. We believe the people of Morpeth should be rightly proud of what we have achieved as a partnership team."



Major construction work that will not only safeguard the future of a piece of history on the Northumberland coast but will transform it into what should become a popular visitor attraction, is only weeks away from completion.

The 15<sup>th</sup> Century Pele Tower in the village of Cresswell was a virtual ruin before work started on restoring and repairing it so the Grade II\* listed structure could be removed from Historic England's 'Heritage at Risk' on which it was placed because of its dilapidated condition, as well as being opened to the public for the first time in its history.



Now it has had a new roof fitted after being totally exposed to the elements for more than half a century. The Pele Tower's stonework has been repointed, its windows glazed, floors re-laid, heating and electricity installed and a viewing gallery created so that visitors can climb to the top of the building to enjoy spectacular views across Druridge Bay.

Once the building work has been completed, the three storey Tower will be

fitted out with interpretation panels and displays prior to its anticipated opening to the public sometime early next spring.

That will be the culmination of a five-year project led by the Cresswell Pele Tower Charitable Incorporated Organisation (CIO) which was set up by Cresswell Parish Council with the support and assistance of Greater Morpeth Development Trust, to give the 600-year-old structure a sustainable future.

In the Middle Ages around 170 Pele Towers were built as miniature castles across Northumberland, Cumbria and the Scottish Borders to provide local communities with some form of shelter and protection against the raids of the notorious Border Reivers.

Now, however, only a handful remain in relatively good condition with Cresswell being one of the best examples still standing.

The project completion date has slipped due to the outbreak of the coronavirus but it is anticipated that all the capital works on the Tower as well as the restoration of a derelict Victorian bothy in its grounds.



Volunteers have played a significant role in the Pele Tower restoration project including being involved in archaeological digs close to the site which have unearthed many fascinating artefacts as well as evidence to show that primitive communities were living in the Cresswell area some 10,000 years ago.

The project team can't wait for all the work to be finished so that the Pele Tower can be opened to the public because it will help give people a real insight as to what life might have been like in our village many hundreds of years ago.



# CEO 2019/20 Update Report



Greater Morpeth Development Trust (GMDT) has been in existence since 2006 and the diverse range of projects carried out over the past fourteen years could not have happened without the support of our staff, volunteers, partners, funders and members.

GMDT has continued the objective of developing partnership networks through facilitation to develop initiatives and through the skill base in the team adding value where ever possible to make Morpeth a quality place to live, visit and work.

The existing staff team is made up of 1 full time and 2 part time members supported by a range of professional associates to deliver a portfolio of quality projects and through engaging volunteers' support and strong partnership working we strive to maintain our level of service and delivery.

There continues to be a strong commitment from GMDT to support the economy of Morpeth with the focus for 2019/20 being the completion of the Morpeth Railway Station Project which delivered project management income along with a future sustainable income from the Enterprise centre. We continue to help partners across Morpeth to develop projects such as the redevelopment of the Boys Brigade and KEVI Archive projects. We have also had an influential role in delivering Cresswell Pele tower project tapping into our funding and project management skills to support the redevelopment of another heritage asset at risk.

2019/20 has been a challenging year for everyone and a busy year across all the



## HOUSE OF COMMONS LONDON SW1A 0AA

Projects like Morpeth Railway Station do not just happen, but are down to the hard work, grit and dedication of often only a handful of people. The successful redevelopment is testament to the fine work done by yourself, the staff and the board of trustees over the past seven years.

Once again GMDT has shown what a small but dedicated team of people can achieve and has cemented its reputation for delivering quality renovations of our historic buildings.

I want to put on record my thanks to yourself, the other members of the team and the trustees for the work you have done and very much look forward to seeing your next project.

Best Wishes

Ian Lavery - Member of Parliament for Wansbeck

Interest Groups, GMDT continues to invest heavily into the capital projects portfolio along with the further development of our volunteers.

The Arts & Culture Group continues to deliver and expand a full programme through the cinema, theatre evenings, NTC performances, World Book night and Picnic in the Park, improving the quality of these events year on year through new initiatives like film festival and streaming of recorded live performances.

The Environment Group has worked hard to enhance footpaths around Bluebell Woods Easter Field and this is complimented by the updating of the walking map series focussing on the area around Morpeth. Engagement of volunteers for litter clean-up activity has been very successful working with a range of partners and this is now being led by the Morpeth Litter Group.

The Heritage Group continues to support annual events such as the Gathering, Heritage Open Days and the Heritage Network.

We would like to thank our partners, funders, volunteers, Board members, interest group members, associates and staff for their contribution to what has been achieved over the

past fourteen years in an increasingly challenging environment for the sector. A key member of the Board has been Doug Phillips who was a volunteer for fourteen years and Chair for the past thirteen years playing a major role in the redevelopment of both the Town hall and more recently the Railway Station. Doug is stepping down as Chair in the new year 2020/21 and all his efforts have made a big contribution to the achievements of GMDT.

## Looking Forward

2020/21 is a challenging year for everyone due to the Coronavirus. We have changed our way of working with the staff team mostly working from home and the Board and project meetings carried out by Zoom or Teams. This has enabled us to keep things going across all the Interest Groups and GMDT continues to invest heavily into the capital projects portfolio along with the further development of our volunteers.

David Lodge, CEO



# Greater Morpeth Development Trust

## Financial Report 12 months to March 2020

### Statement of Financial activities for year ended 31<sup>st</sup> March 2020

	Unrestricted Fund £	Restricted Fund £	2020 Total funds £	2019 Total funds (restated & Unaudited) £
<b>INCOME AND ENDOWMENTS FROM</b>				
Donations and legacies	7,200	1,596,707	1,603,907	816,767
Other trading activities	16,146	10,974	27,120	72,024
<b>Total</b>	<b>23,346</b>	<b>1,607,681</b>	<b>1,631,027</b>	<b>888,791</b>
<b>EXPENDITURE ON</b>				
Raising funds	560	15,618	16,178	21,215
Charitable Activities	26,943	112,635	139,578	102,020
<b>Total</b>	<b>27,503</b>	<b>128,253</b>	<b>155,756</b>	<b>123,235</b>
<b>NET INCOME/(EXPENDITURE)</b>	<b>(4,157)</b>	<b>1,479,428</b>	<b>1,475,271</b>	<b>765,556</b>
<b>RECONCILIATION OF FUNDS</b>				
Total Funds brought Forward	22,872	776,541	799,413	33,857
<b>TOTAL FUNDS CARRIED FORWARD</b>	<b>18,715</b>	<b>2,255,969</b>	<b>2,274,684</b>	<b>799,413</b>

### Balance Sheet as at 31<sup>st</sup> March 2020

	£	£	2020 £	2019 £
<b>FIXED ASSETS</b>				
Tangible assets	307	1,832,918	1,833,225	395,027
<b>CURRENT ASSETS</b>				
Debtors	293	51,005	51,298	16,259
Cash at bank & in hand	21,865	372,046	393,911	400,627
	<b>22,158</b>	<b>423,051</b>	<b>445,209</b>	<b>416,886</b>
<b>Creditors: amounts falling due within one year</b>	<b>(3,750)</b>	<b>-</b>	<b>(3,750)</b>	<b>(12,500)</b>
<b>Net current assets</b>	<b>18,408</b>	<b>423,051</b>	<b>441,459</b>	<b>404,386</b>
<b>Total assets less current liabilities</b>	<b>18,715</b>	<b>2,255,969</b>	<b>2,274,684</b>	<b>799,413</b>
<b>Net assets</b>	<b>18,715</b>	<b>2,255,969</b>	<b>2,274,684</b>	<b>799,413</b>
<b>Funds</b>				
Unrestricted income funds			18,715	22,872
Restricted income funds			2,255,969	776,541
<b>Total Funds</b>			<b>2,274,684</b>	<b>799,413</b>

These financial statements have been audited under the requirements of Section 145 of the Charities Act 2011

## Financial Report

Morpeth Railway Station has taken over seven years from inception to completion and has been a major undertaking for a Charity of our size and could not have been delivered without the support of a portfolio of funders who provided the capital to realise the opportunity of restoring a key asset for the town. Not only did the project reinstate a Grade II listed building to its former glory but provides a gateway to the town of which the public can be proud. The funding was not only secured to safeguard the future of the Grade II listed station building, but to provide an enterprise hub for small businesses as well as creating a state-of-the-art ticket office, a café and taxi office, and provide modern facilities for today's rail users such as new toilets. The occupation of units in the office suite will supply an income stream for GMDT which should sustain the Charity in future years and enable public benefit to be realised.



# Morpeth Station wins a top national heritage conservation award



The Greater Morpeth Development Trust-led project to give the town's Victorian railway station a new lease of life, has won a prestigious national conservation award. The station has just been chosen as one of the top winners at the 2020 National Railway Heritage Awards which attracted entries from all over Britain. This year the award ceremony had to be held virtually on-line because of the Covid pandemic restrictions.

Morpeth was named as the winner of the Railway Heritage Conservation Award category ahead of two other short-listed projects from Scottish stations.

For the past seven years the project has been driven by GMDT which gathered a partnership team of the National Lottery Heritage Enterprise Fund, the Railway Heritage Trust, Northumberland County Council, Network Rail and train operators Northern, to support its idea of restoring the station to its former glory as well as creating an enterprise hub by converting empty and disused office space in the main station building, into unique accommodation for up to seven small local businesses.

In a report delivered at the presentation ceremony, the judges praised the efforts to restore the station by repairing or replacing original stonework, doors and windows where necessary, as well as re-instating 15 very tall chimney stacks which gave Morpeth its distinctive appearance before they were reduced in size for safety reasons.

"As with so many stations the once ample accommodation has proved over-generous in the modern era and, as elsewhere, much of the building at Morpeth was disused and unoccupied leading to a deterioration of the structure," the judges reported.

They remarked on the high standard of the completed work at the station adding: "The driving force behind the scheme was Greater Morpeth Development Trust and they, along with their partners, are to be congratulated on the work undertaken on this important and attractive station." GMDT Chief Executive David Lodge said that on behalf of all the partners he was 'proud to say how thrilled and delighted we are that all our hard work over the past few years at Morpeth Railway Station, has been recognised by the presentation of this much-valued award.'

He added: "Morpeth once again has a railway station the town can be proud of not only as a modern transport link based in such a fine old building, but one that now has a new lease of life and a viable future as a hub for local business ventures.

"As the world starts to get back to some form of post-Covid normality, the station will welcome more passengers again and we are certain they will be impressed by what we have achieved to provide local people with first-class rail travel facilities at the same time as creating a welcoming gateway to passengers visiting this part of Northumberland."

